



INNOVATIVE CLIMATE SOLUTIONS

PORTABLE HEATING & COOLING

WWW.LBWHITE.COM | 800.345.7200 | CUSTOMERSERVICE@LBWHITE.COM

2023-2024



PRODUCTS WITHIN BROCHURE ARE SUBJECT TO THE FOLLOWING WARNING:



Cancer and reproductive harm. See www.P65Warnings.ca.gov.

WE STAND BEHIND QUALITY.



For over 70 years L.B. White has been America's leading portable heat designer. With Midwestern manufacturing expertise, we stand behind our craftsmanship, too. So much so, we back our products with a two-year limited warranty—the first and only of its kind in the industry.*

Built to last

Construction environments can be hard on equipment especially in winter. To safeguard your investment, L.B. White heaters are engineered to hold up to years of use. Robust materials and careful workmanship combine

in heavy-duty features, like:

- Fully welded heat exchangers
- Powder coated protective frames
- Heavy gauge combustion chambers

A commitment to quality you can count on. Every unit is backed by an industry-leading two-year warranty.* Before leaving our docks, every heater is test-fired and carefully inspected. It's been L.B. White tradition since 1952.



CUSTOMER SERVICE:

Phone: 608-779-6100 - Email: customerservice@lbwhite.com



TECHNICAL SUPPORT:

Phone: 608-779-6101 - Email: techsupport@lbwhite.com



ONLINE RESOURCES:

For frequently asked questions, service guides, troubleshooting and maintenance videos, or to find the closest service center to you, visit www.lbwhite.com



FIT YOUR JOB SITE

WHAT BTU/H IS NEEDED TO HEAT A GIVEN AREA?

1. Multiply room length x width x height to determine total cubic feet.
2. Locate desired rise in temperature.
Example: Room is 10°C / 50°F, desired temperature is 21°C / 70°F = 11°C / 20°F rise in temperature
3. Read Btu/h

CUBIC FEET	RISE IN TEMPERATURE							
	6°C / 10°F	11°C / 20°F	17°C / 30°F	22°C / 40°F	28°C / 50°F	33°C / 60°F	39°C / 70°F	44°C / 80°F
4,000	5,320	10,640	15,960	21,280	26,600	31,920	37,240	42,560
8,000	10,640	21,280	31,920	42,560	53,200	63,840	74,480	85,120
12,000	15,960	31,920	47,880	63,840	79,800	95,760	111,720	127,680
16,000	21,280	42,560	63,840	85,120	106,400	127,680	148,960	170,240
20,000	26,600	53,200	79,800	106,400	133,000	159,600	186,200	212,800
24,000	31,920	63,840	95,760	127,680	159,600	191,520	223,440	255,360
28,000	37,240	74,480	111,720	148,960	186,200	223,440	260,680	297,920
32,000	42,560	85,120	127,680	170,240	212,800	255,360	297,920	340,480
36,000	47,880	95,760	143,640	191,520	239,400	287,280	335,160	383,040
40,000	53,200	106,400	159,600	212,800	266,000	319,200	372,400	425,600
44,000	58,520	117,040	175,560	234,080	292,600	351,120	409,640	468,160
48,000	63,840	127,680	191,520	255,360	319,200	383,040	446,880	510,720
52,000	69,160	138,320	207,480	276,640	345,800	414,960	484,120	553,280
56,000	74,480	148,960	223,440	297,920	372,400	446,880	521,360	595,840
60,000	79,800	159,600	239,400	319,200	399,000	478,800	558,600	638,400
64,000	85,120	170,240	255,360	340,480	425,600	510,720	595,840	680,960
68,000	90,440	180,880	271,320	361,760	452,200	542,640	633,080	723,520
72,000	95,760	191,520	287,280	383,040	478,800	574,560	670,320	766,080
76,000	101,080	202,160	303,240	404,320	505,400	606,480	707,560	808,640
80,000	106,400	212,800	319,200	425,600	532,000	638,400	744,800	851,200
84,000	111,720	223,440	335,160	446,880	558,600	670,320	782,040	893,760
88,000	117,040	234,080	351,120	468,160	585,200	702,240	819,280	936,320
92,000	122,360	244,720	367,080	489,440	611,800	734,160	856,520	978,880
96,000	127,680	255,360	383,040	510,720	638,400	766,080	893,760	1,021,440
100,000	133,000	266,000	399,000	532,000	665,000	798,000	931,000	1,064,000
104,000	138,320	276,640	414,960	553,280	691,600	829,920	968,240	1,106,560
108,000	143,640	287,280	430,920	574,560	718,200	861,840	1,005,480	1,149,120
112,000	148,960	297,920	446,880	595,840	744,800	893,760	1,042,720	1,191,680
116,000	154,280	308,560	462,840	617,120	771,400	925,680	1,079,960	1,234,240
120,000	159,600	319,200	478,800	638,400	798,000	957,600	1,117,200	1,276,800

The number of Btu/h may vary from the chart due to building configurations, materials, and weather variables.

DOWNLOAD THE FREE HEAT ESTIMATOR APP



- Estimate how many heaters are needed for a space
- Quickly factor-in:
 - ✓ Height, width and length of space
 - ✓ Desired rise in temp
 - ✓ Heater model
- Provide a no-cost field tool for your entire team and/or customers



Scan the QR code with your smartphone's camera for instructions on how to download the L.B. White Heat Estimator App today!

www.LBWhite.com/HeatEstimator

WHAT SIZE GAS SUPPLY IS NEEDED FOR MY HEATER?



HEATERS UP TO 250,000 BTU/H:

AVERAGE TEMP (°F)	50°	40°	30°	20°	10°	-10°
NUMBER OF 100 LB. GAS CYLINDERS	2	2	3	3	3	3

CYLINDERS MUST BE MANIPULATED TOGETHER TO ALLOW SIMULTANEOUS VAPOR WITHDRAWAL FROM ALL CYLINDERS.



HEATERS GREATER THAN 250,000 BTU/H:

500 GALLON TANK - 1 HEATER PER TANK

1000 GALLON TANK - 2 HEATERS PER TANK

(100LB. OF PROPANE = 23.6 GAL [100/4.24])

COMMANDER™

Ductable Make-Up Air Unit



Commander™ Make-Up Air

Commander manages air conditions in construction sites where improved air quality, temperature control, and moisture reduction is a necessity. These areas demand tempered heat while maintaining positive pressure all done using the Commanders modulating control and powerful air flow that is proven.

- ✓ Constant air exchanges
- ✓ Modulating control reduces fuel costs
- ✓ Provides tempered fresh air
- ✓ Evenly heats interior and surfaces
- ✓ Maintains positive building pressure
- ✓ Available in 500,000 and 1,000,000 Btu/h

ALL MODELS AVAILABLE IN:

DF (LP/NG)



L.B. White LINK™

Now telematics-enabled to put critical alerts, runtime, location, and more at your fingertips. Learn more at LBWhite.com/LINK.



MADE IN USA
OF U.S. & IMPORTED PARTS



COMMANDER™	500K	1000K
BTU/HR rating (min/max)	100,000 - 500,000	200,000 - 1,000,000
Heated air output (CFM)	3000	6000
Fuel type	LP/NG	LP/NG
Connection	1" NPT	1" NPT
Fuel consumption LP gas max (lbs/hr)	5.51	9.3
Fuel consumption NG gas max (cu ft/hr)	500	1000
Amps	11.1	8.5
Electric supply (volts/hz/phase)	120 / 60 / 1	240 / 60 / 1
Electrical connection	NEMA 5-20 120V, 20A 3-Wire	NEMA L6-20 240V / 20A, 3-Wire
Diagnostic indicator	S	S
Unit length (in)	61.88	72.44
Unit width (in)	32.00	35
Unit height (in)	52.08	56.08
Shipping weight (lb)	525 lb	637 lb
Single point lifting bale	S	S
Thermostat connection	Customer Hard Wired	Customer Hard Wired
Fork pockets	A	A
Remote digital temperature control	A	A
Remote thermostat - dial	A	A
Ventilation (fan only)	S	S
Regulator	A	A
Outlet duct diameter (in)	16	24
Inlet duct diameter (in)	20	24
Max duct length (ft)	100	100
LINK™ Ready	S	S
Certified to ANSI 283.7 / CSA 2.14-2017	US / CAN	US Only

S=Standard A=Accessory

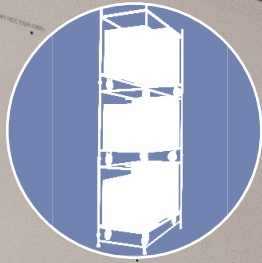
Accessories (sold separately):

- Thermostat (No cord included, customer supplied, hard wire into the heater), 500-09381
- Remote Digital Temp Control, 500-133951
- Kit, Duct, Flexible, 24" Dia x 25', w/clamp, 500-133767
- Kit, Duct, Flexible, 16" Dia x 25', w/clamp, 500-30076
- 2nd Stage Regulator (For 500K and 1M), 500-132136
- Forklift Pocket Kit (For 500K), 500-133940A
- Forklift Pocket Kit (For 1M), 500-133940B
- Kit, Duct, Flexible, 20" Dia x 25', w/clamp, 500-30053
- Kit, Stacking Base (For 500K), 500-133994A
- Kit, Stacking Base (For 1M), 500-133994B

CA RESIDENTS:
 **WARNING**
 Cancer and reproductive harm. See
www.P65Warnings.ca.gov.

COMMANDER™

Make-Up Air Unit: Make-Up Air is exterior air that is tempered and distributed evenly in the interior. The air is monitored and tempered to replace and exchange the existing air.

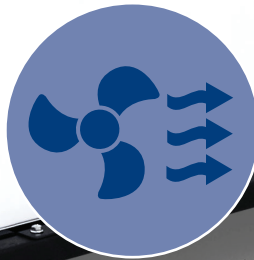


Stackable

Stacks 3 units high for storage with optional stacking kit



Centralized Control Panel



Vent mode

Keep heated air working hard without using more fuel. Moves heated air throughout the space using fan only.

Commander™ 1000

Features



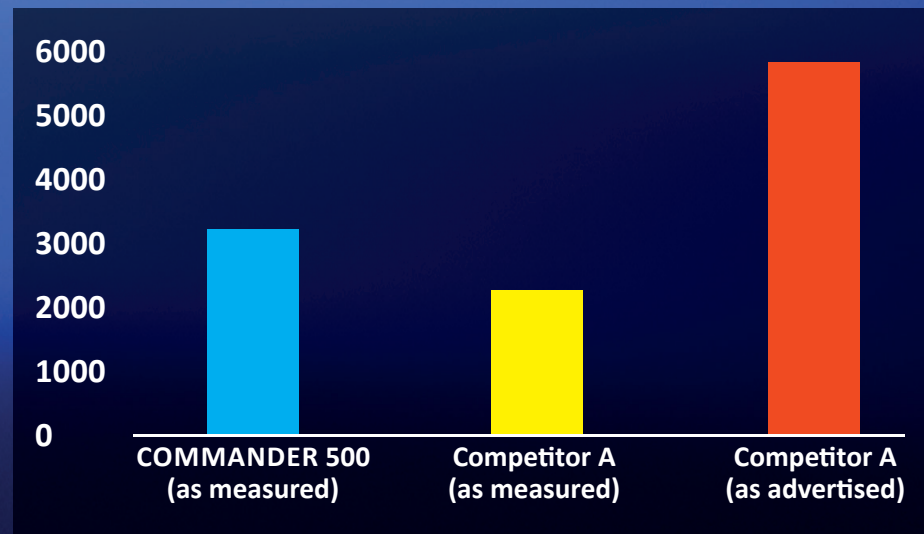
Remote Digital thermostat offering the same functionality as the internal temperature control, but tethered to a convenient location



Thermostatic control option for set-it-and-forget-it efficiency. In applications where heat is ducted to a different space, option to operate thermostat remotely.

Fault indicators Top light indicates a High Limit condition, while bottom light indicates a heater fault.

Commander™ CFM Comparison



Commander CFM Comparison Commander™ manages air conditions in construction sites. These areas demand tempered heat while maintaining positive pressure achieved with our powerful air flow that is proven.

FOREMAN®

Ductable Indirect-Fired Portable Heaters



Indirect-fired heat with reliable CFM

Vented to provide clean, dry heat

- ✓ **Fuel-conscience design** with options to recirculate heated air and use remote thermostat
- ✓ **Quiet** with less than 70 dB operation
- ✓ **Optimal portability** with wheels, handle, fit through standard 36" door frame, single point lifting bail and forklift pocket*
- ✓ **Built to last** with fully welded heat exchangers and powder-coated frame
 - Dual Fuel (DF) models can quickly switch from NG to LP
 - Oil models have an onboard fuel tank and option to run diesel #1 or #2
 - Saves storage space with option to stack* or store on end**

* Foreman 500 and 750 models only

** Foreman 230 only

ALL MODELS AVAILABLE IN:

Oil (Diesel) / DF (LP/NG)



L.B. WHITE
LINK

L.B. White LINK™

Now telematics-enabled to put critical alerts, runtime, location, and more at your fingertips.
Learn more at LBWhite.com/LINK.

 **MADE IN USA**
OF U.S. & IMPORTED PARTS



FOREMAN®		230 DF	230 Oil	500 DF	500 Oil	750 DF	750 Oil
Btu/h Rating		230,000	230,000	500,000	500,000	750,000	750,000
Fuel type		LP/NG	#1 or #2 diesel	LP/NG	#1 or #2 diesel	LP/NG	#1 or #2 diesel
Fuel consumption max	LP (lbs./hr)	10.6	-	23.0	-	34.5	-
	NG (cu.ft/hr)	230	-	500.0	-	750.0	-
	Diesel 1 or 2 (g/hr)	-	1.7	-	3.6	-	5.4
Inlet gas pressure min/max	LP (in W.C.)	7/13.5	-	8/13.5	-	8/13.5	-
	NG (in W.C.)	7/13.5	-	8/13.5	-	8/13.5	-
Burner type		BECKETT®	BECKETT®	RIELLO®	BECKETT®	RIELLO®	BECKETT®
Tank capacity (gal)		-	42	-	62	-	62
Blower fan output (CFM)		1900	1900	3457	3457	4280	4280
Outlet static pressure (in W.C.)		2.5	2.5	2.5	2.5	2.5	2.5
Motor horsepower		1/2	1/2	1.5	1.5	2.0	2.0
Electrical supply (volts/hz/phase)		120/60/1	120/60/1	120/60/1	120/60/1	240/60/1	240/60/1
Outlet duct diameter (in)		12	12	12	12	12	12
Outlet duct connections		1	1	2**	2**	2**	2**
Outlet duct max length (ft)		100	100	100	100	100	100
Air recirculation inlet dia. (in)		16	16	20	20	20	20
Amps (start/continuous)		32/9	32/9	35/14.8	35/14.8	35/12	35/12
Unit length (in)		60.2	60.2	94.0	94.0	94.0	94.0
Unit width (in)		26.6	26.6	32.0	32.0	32.0	32.0
Unit height (in)		43.3	43.3	53.0	53.0	53.0	53.0
Unit weight (lbs)		326	363	674	780	684	786
Ship weight (lbs)*		450	460	852	960	877	970
Single point lifting bale		S	S	S	S	S	S
Fork lift pockets		-	-	S	S	S	S
LINK™ capable		S	S	S	S	S	S
LINK™ ready		O	O	O	O	O	O
Certified to ANSI/CSA standards		U.S. & CA	U.S. & CA	U.S. & CA	U.S. & CA	U.S. & CA	U.S. & CA

S=Standard O=Optional

* Ships on custom pallet.

**Operates from single 16" connection with duct adapter accessory sold separately

Accessories (sold separately):

- Thermostat, Nema 4X w/ 25 ft. cord, 30125
- Duct, 12" x 25', Fire-retardant, w/ Clamp, 30052
- Duct, 20" x 25', Recirculating, w/ Clamp, 30053
- Duct, 16" x 25', Fire-retardant, w/ Clamp, 30076
- Rain Cap, Foreman 230s/500s/750 DF, 30162
- Rain Cap, Foreman 750 Oil, 30162A
- Exhaust Pipe Extension, Steel, Foreman 230s/500s/750 DF, 6"dia., 30161
- Exhaust Pipe Extension, Steel, Foreman 750 Oil, 8"dia., 30161A
- Gas Hose, 3/4" x 15', Foreman 230/500, 25965
- Gas Hose, 1" x 15', Foreman 750, 132047
- Regulator, all Foreman DF, 25141*
- Heater Stacking Kit, Foreman 500/750, 30903
- Duct Adapter Kit, 16", 30902

* When running on NG requires 1" hose diameter and inlet pressure of at least 10 P.S.I.
When inlet pressure is 2 to 10 P.S.I. use regulator, 132136.

CA RESIDENTS:
 **WARNING**
 Cancer and reproductive harm. See
www.P65Warnings.ca.gov.

CLEAN, DRY HEAT

Deliver heat that is free of the byproducts of combustion with the Foreman indirect-fired series.



Quiet operation

Reduces sound pollution and makes meeting OSHA standards easier with less than 70 dB of sound output while operating.

Rental ready

Indoor-outdoor rated

- Operate outdoors and duct up to 100 feet to save space in work areas
- Vent outside or into existing chimney to operate indoors and mitigate heat loss

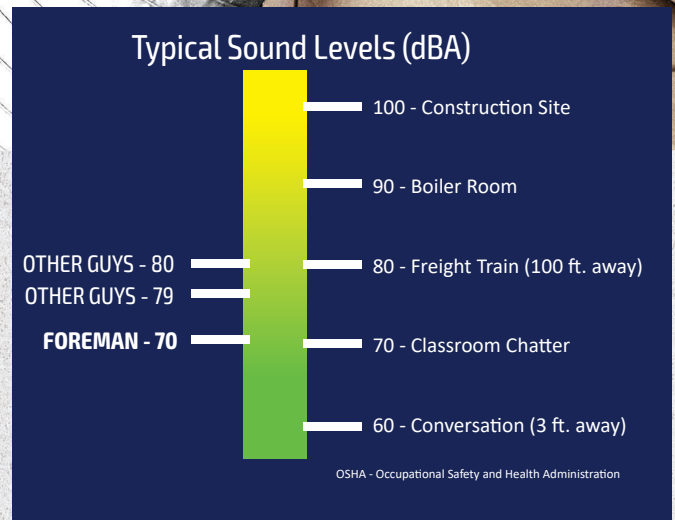
Fuel flexibility

- Dual Fuel (DF) model operates from natural or propane gas with the turn of a ball valve. No conversion kit required.
- Oil model has on-board tank or easily connects to remote fuel tank.

Optimal portability

- One person portable with wheels, handle and fit through standard door
- Foreman 750 does not require a forklift to move
- Equipped with single point lifting bail and forklift pockets on 500/750

Efficient off season storage



One-person portability



Lifting bail



Stands on end
(Foreman 230)



Stacks two units high
with optional stacking kit
(Foreman 500 & 750)

Fuel-conscience features



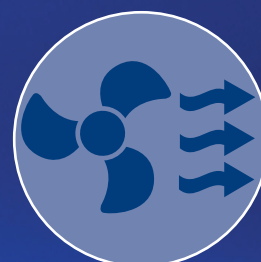
Recirculate heated air

Recycle air that's already been heated and use less fuel.



Thermostatic control

Automatically heat to a set temperature and use only as much fuel as is required with the remote thermostat option.



Vent mode

Keep heated air working hard without using more fuel. Moves heated air throughout the space using fan only.

Centralized control panel



Less power supply headaches

With the onboard volt meter, operators can easily confirm adequate power is available from the start and monitor throughout heater operation.

Streamlined status and diagnostics

Heater status lights provide a quick indication of operation status. If problems arise, status lights streamline troubleshooting and can save service managers a trip.

Anticipate maintenance

Take the guesswork out of how long a heater ran when on rental with the hour meter. Rely on the actual heating hours to schedule maintenance rather than calendar days.

Burner-specific insights

The Beckett® GeniSys™ control provides status and diagnostic information specific to the burner.

JOURNEYMAN®

Ductable
Indirect-Fired
Portable Heaters



Trimmed and simplified raw heat

Vented to provide clean, dry heat

- ✓ **Simplified** units with less electronics to deal with
- ✓ **Quiet** with less than 70 dB operation
- ✓ **Optimal portability** with wheels, handle, fit through standard 36" door frame, single point lifting bail
- ✓ **Built to last** with fully welded heat exchangers and powder-coated frame
 - Dual Fuel (DF) models can quickly switch from NG to LP
 - Oil models have an onboard fuel tank and option to run diesel #1 or #2

ALL MODELS AVAILABLE IN:

Oil (Diesel) / DF (LP/NG)



 MADE IN USA
OF U.S. & IMPORTED PARTS



JOURNEYMAN®		360 DF	360 Oil
Btu/h Rating		360,000	360,000
Fuel type		LP/NG	#1 or #2 diesel
Fuel consumption max	LP (lbs./hr)	16.7	-
	NG (cu.ft/hr)	360	-
	Diesel 1 or 2 (g/hr)	-	2.6
Inlet gas pressure min/max	LP (in W.C.)	7/13.5	-
	NG (in W.C.)	7/13.5	-
Burner type		RIELLO®	BECKETT®
Tank capacity (gal)		-	40
Blower fan output (CFM)		2,000	2,000
Outlet static pressure (in W.C.)		0.7 (two 12" outlets) / 0.5 (one 16" outlet)	0.7 (two 12" outlets) / 0.5 (one 16" outlet)
Motor horsepower		1/2	1/2
Electrical supply (volts/hz/phase)		120/60/1	120/60/1
Outlet duct diameter		12" (for two ducts) / 16" (for one duct)	12" (for two ducts) / 16" (for one duct)
Outlet duct connections		2	2
Running amps		8	8
Unit length (in)		82	82
Unit width (in)		30.75	30.75
Unit height (in)		50.5	50.5
Unit weight (lbs)		328	350
Ship weight (lbs)		445	457
Third party certified to ANSI Z83.7/CSA 2.14-2017		OMNI	OMNI

Accessories (sold separately):

- Thermostat, Nema 4X w/ 25 ft. cord, 30125
- Duct, 12" x 25', Fire-retardant, w/ Clamp, 30052
- Duct, 16" x 25', Fire-retardant, w/ Clamp, 30076
- Rain Cap, 30162
- Exhaust Pipe Extension, 30161
- Duct Adapter, 30902
- Voltmeter Box, 133663
- Forklift Pocket Kit, 133611
- Gas Hose 3/4", 25965
- Regulator, 25141*

* When inlet pressure to heater is 2-10 P.S.I., use regulator 500-25141

CA RESIDENTS:
 **WARNING**
 Cancer and reproductive harm. See
www.P65Warnings.ca.gov.

VOLT® Electric Forced Air Portable Heaters



- ✓ **User-friendly electric design**
- ✓ **For areas where heating & drying is needed**
- ✓ **Capable of quick, high temp rises**
- ✓ **Ventilation & air circulation are not needed**

Jobsite Tough

- Industrial-grade fan
- Stainless jacketed heating coils
- Powder coated steel housing
- High-quality sealed motor

Safe & Reliable

- Quiet, combustion-free operation
- No fuel spills or odors
- Overheat protection at 104° F
- UL approved

ALL MODELS AVAILABLE IN:

Electric



Not available in Canada



VOLT®	1.5	3	6	9	18-1	18-3	40	60
Wattage	1,500	3,000	6,000	9,000 (9kW) 6,000 (6kW)	19,000 (19kW) 13,000 (13kW)	19,000 (19kW) 13,000 (13kW)	40,000 (40kW) 32,000 (32kW) 16,000 (16kW)	60,000 (60kW) 48,000 (48kW) 24,000 (24kW)
BTU/H Rating	5,100	10,200	20,500	30,700 (9kW) 20,500 (6kW)	65,000 (19kW) 45,000 (13kW)	65,000 (19kW) 45,000 (13kW)	136,500 (40kW) 102,400 (32kW) 51,200 (16kW)	205,000 (60kW) 164,000 (48kW) 82,000 (24kW)
Electric supply (volts/hz/phase)	120/60/1	240/60/1	240/60/1	240/60/1	240 or 208*/60/1	240 or 208*/60/3	480/60/3	480/60/3
Amps (Starting/Continuous Operation)	12.5	12.5	25	37.5 (9kW) 25 (6kW)	81 (19kW) 54 (13kW)	47 (19kW) 31 (13kW)	50 (40kW) 40 (32kW) 20 (16kW)	75 (60kW) 60 (48kW) 30 (24kW)
Blower Fan Output (CFM)	116	205	250	350	590 or 1,000	590 or 1,000	1,765	1,765
Power Cord	10ft, 12AWG	10ft, 16AWG	10ft, 8AWG	10ft, 8AWG	Not included	Not included	Not included	Not included
Max Cable Length	N/A	N/A	100-ft (8AWG, 3-wire, SOOW)	50-ft (8AWG, 3-wire, SOOW) 100-ft (6AWG, 3-wire, SOOW)	50-ft (2AWG, 3-wire, SOOW)	50-ft (6AWG, 4-wire, SOOW) 100-ft (4AWG, 4-wire, SOOW)	50-ft (4AWG, 4-wire, SOOW) 100-ft (2AWG, 4-wire, SOOW)	50-ft (2AWG, 4-wire, SOOW)
Plug	NEMA 5-15P	NEMA 6-15P	NEMA 14- 30P	NEMA 14-50P	Not included	Not included	Not included	Not included
Ambient Thermostat Temperature Range	32 - 100 °F	32 - 100 °F	32 - 100 °F	32 - 100 °F	32 - 100 °F	32 - 100 °F	32 - 100 °F	32 - 100 °F
Length (in.)	11	11	20	23	32	32	46	46
Width (in.)	12	10	12	14	14	14	20	20
Height (in.)	8	15	17	18	20	20	25	25
Unit Weight (lbs.)	13.7	20.3	32.9	39.9	62	62	125	125
Shipping Weight (lbs.)	15	22	40	42	65	65	130	130
Running Decibels (dba)	47	50	55	55	58	58	82	82
Three Heat Output Modes	-	-	-	-	S	S	S	S
Powder Coated Steel Housing	S	S	S	S	S	S	S	S
Wheels	-	-	-	-	-	-	S	S
UL Approved	S	S	S	S	S	S	S	-

S=Standard

* Does not operate at full output

Accessories (sold separately):

- 500-133965, Volt® 1.5 Hanging Kit
- 500-133975, Volt® 3 Hanging Kit
- 500-133980, Volt® 6 Hanging Kit

CA RESIDENTS:

 **WARNING**
Cancer and reproductive harm. See
www.P65Warnings.ca.gov.

PREMIER® Enclosed-Flame Direct-Fired Portable Heaters



Enclosed flame design invented by L.B. White

Direct-fired efficiency with added safety

- ✓ **Enclosed flame** promotes safer work environments and provides option to duct
- ✓ **99% direct-fired fuel efficiency** boosted by remote thermostat and option to move air only like a fan
- ✓ **Quiet** with less than 70 dB operation
 - Dual Fuel (DF) models quickly switch from NG to LP
 - Fits through standard 36" door frame while handles and wheels on larger models provide maneuverability

MODELS AVAILABLE IN:

LP

DF (LP/NG)

40,000
(LP only)

**NEW &
ENHANCED 2.0**
350,000

80,000

170,000

NEW
700,000



L.B. White LINK™

Now telematics-enabled to put critical alerts, runtime, location, and more at your fingertips. Learn more at LBWhite.com/LINK.



MADE IN USA
OF U.S. & IMPORTED PARTS



PREMIER®	40	80, 2.0	80 DF, 2.0	170, 2.0	170 DF, 2.0	350 DF, 2.0	700 DF
BTU/HR rating	40,000	80,000	80,000	170,000	170,000	350,000	700,000/350,000
Heated air output (CFM)	330	450	450	1,200	1,200	2,500	5,000
Fuel type	LP	LP	LP, NG	LP	LP, NG	LP, NG	LP, NG
Fuel consumption LP gas max (lbs/hr)	1.9	3.7	3.7	7.9	7.9	16.2	32.4 / 16.2
Fuel consumption NG gas max (cu ft/hr)	-	-	80	-	170	350	700 / 350
Amps (start/continuous)	2.6 / 1.0	5.0 / 1.5	5.0 / 1.5	7.3 / 5.0	7.3 / 5.0	25.0* / 9.0	28 / 12
Electric supply (volts/hz/phase)	120/60/1	120/60/1	120/60/1	120/60/1	120/60/1	120/60/1	240/60/1
Motor horsepower	1/12	1/8	1/8	1/3	1/3	1	1
Running decibels	62	70	70	70	70	72	70.4
Unit length (in)	24.8	28	28	32.3	32.3	48.3	47.5
Unit width (in)	14.5**	13.5	13.5	24.3	24.3	28.0	28.0
Unit height (in)	16.3	22.0	22.0	32.0	32.0	41.0	69.0
Shipping weight (lb)	60	79	79	161	162	320	640
Case material	Tri-Shield™***	Tri-Shield™***	Tri-Shield™***	Tri-Shield™***	Tri-Shield™***	Tri-Shield™***	Tri-Shield™***
Electrical connection	Mounted inlet	Mounted inlet	Mounted inlet	Mounted inlet	Mounted inlet	Mounted inlet	Mounted inlet
Thermostat connection	Mounted inlet	Mounted inlet	Mounted inlet	Mounted inlet	Mounted inlet	Mounted inlet	Mounted inlet
Wheels	-	-	-	Semi-pneumatic	Semi-pneumatic	Semi-pneumatic	O
Ventilation (fan only)	S	S	S	S	S	S	S
Gas hose, regulator & thermostat	S	S	S	S	S	S	O
Outlet duct diameter (in)	8	12	12	12	12	18	18
Outlet duct max length (ft)	12	12	12	12	12	25	25
LINK™ capable	-	-	-	-	-	S	-
Certified to ANSI/CSA standards	U.S. & CA	U.S. & CA	U.S. & CA	U.S. & CA	U.S. & CA	U.S. & CA	U.S. & CA

S=Standard O=Optional

* Amps spike over 15 during initial start-up. Check breaker capability.

** 18.1 with optional thermostat bracket installed.

*** Tri-shield coated steel with three unique protective layers including: a non-corrosive hot-dipped, galvanized steel, an oven-cured epoxy primer and baked, thermosetting polyester.

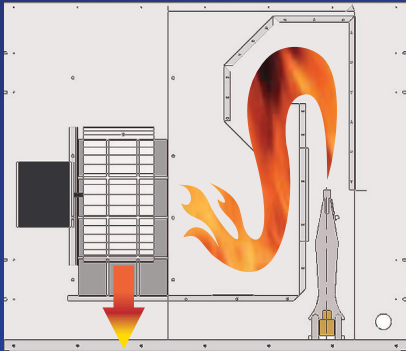
Accessories (sold separately):

- 500-133671, 2-1 Outlet adapter for 24" duct
- 500-132544, Duct, 8" x 12' w/ duct adapter & clamp
- 500-26347 Duct, 12" x 12' w/ duct adapter & clamp
- 500-22835, Duct, 18" x 12' w/ duct adapter & clamp
- 500-133767, Duct, 24" x 25' w/ duct adapter & clamp
- 500-132976, T-Stat with 1.4' cord
- 500-132047, Hose, 1" x 15', 1 NPT both ends
- 500-25141, Regulator, LP
- 500-133766, Kit Mobility

CA RESIDENTS:
 **WARNING**
 Cancer and reproductive harm. See
www.P65Warnings.ca.gov.

EVEN, EFFICIENT HEAT

Do more with enclosed flame technology that provides steady, 99% fuel-efficient heat with the option to duct.



L.B. White was the first company to innovate enclosed flame portable heat technology. Enclosing the process of combustion separates the flame from the environment while still providing the 99% fuel efficiency delivered by direct-fired technology.

Reliable heat where you need it



Certified to ANSI and CSA standards for safety and rated for indoor-outdoor use.

Flexible setup and an even, steady heat delivery make Premier heaters well-suited to many applications from framing, drywalling, stucco work, construction enclosures, brick and block laying, freeze protection, bridgework, docks to excavation and more.

By enclosing the flame and adding a fan to the design, L.B. White enclosed-flamed Premier heaters can be ducted from point A to point B for added flexibility in application.

Model	Duct Diameter	Max Duct Length
Premier 40	8"	12'
Premier 80/80 DF	12"	12'
Premier 170/170 DF	12"	12'
Premier 350 DF	18"	25'

Quiet operation

Avoid excessive job site noise by using Premiers with industry-leading quiet operation. All models operate at decibel levels equivalent to classroom chatter or average conversation.

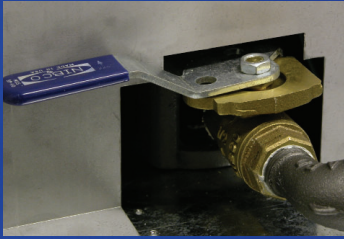


PREMIER ★
(CLASSROOM CHATTER)



OTHER GUYS
(FREIGHT TRAIN)

Easy to setup and operate



Dual fuel models switch from LP to NG with the turn of a ball valve. No changeover kit needed. Start a job with propane and switch over to natural gas once available without changing heaters. Valve can be locked, if needed, to prevent tampering when on rent.



Thermostatic control option for set-it-and-forget-it efficiency. In applications where heat is ducted to a different space, option to operate thermostat remotely by adding extension cord. Every model ships standard with this accessory.



Multi-mode options allow for heat and vent mode. Vent mode will operate unit's fan only when space is up to temperature and only air circulation is needed.



Status lights indicate heating mode stage and quickly aid diagnosis of common issues when troubleshooting.



The Premier 40 offers the convenience of operating from a 20 lb. tank for 6 to 8 hours in many applications. Available in LP only.

Optimal portability

From handle to wheel features, every Premier model is carefully equipped to move about the job site or to the next rental location with ease.



BOSS™
High CFM
Direct-Fired
Portable Heaters




Big heat with high CFM
Most efficient heat for large spaces

- ✓ **Easy to operate** with onboard volt meter and status light
- ✓ **99% direct-fired fuel efficiency** boosted by onboard thermostat and option to move air only like a fan
- ✓ **True portability** with cool-end handle, wheels, and fit through a standard 36" door frame
- Saves storage space with option to stand on end or stack
- Built to last with Tri-shield™ coated steel case, and powder coated hardware that protects against abrasion and corrosion

ALL MODELS AVAILABLE IN:

DF (LP/NG)



 **MADE IN USA**
OF U.S. & IMPORTED PARTS



BOSS™	400 DF	1000 DF
BTU/HR Rating	400,000	1,000,000
Blower fan output (CFM)	2,500	5,000
Fuel type	Dual Fuel – LP/NG	Dual Fuel – LP/NG
Ignition type	Spark	Spark
Fuel Consumption LP Gas (lbs/hr)	18.6	46.3
Fuel Consumption NG (cu ft/hr)	400	1,000
Inlet gas pressure LP min/max (in W.C.)	7"/13.5"	7"/13.5"
Inlet gas pressure NG min/max (in W.C.)	7"/13.5"	7"/13.5"
Amps (start/continuous)	27.2/7.1	23.2/8.4
Electric supply (volts/hz/phase)	120/60/1	120/60/1
Motor horsepower	1/2	1
Unit length (in)	50 (with handle)	60.1
Unit width (in)	21.3	30.8
Unit height (in)	22.5	32.3
Unit weight (lbs)	115	350
Ship weight (lbs)	180	440
Built-in volt meter	S	S
Built-in thermostat	S	S
Vent mode (fan only)	S	S
Certified	U.S. & CA	U.S. & CA

S=Standard O=Optional

Accessories (sold separately):

- Regulator (DF), Boss 400, 500-25141
- Gas hose, Boss 400, 3/4 in. x 15 ft., 500-25965
- Regulator LP (1st stage), Boss 1000, 132235
- Regulator LP (2nd stage), Boss 1000, 132046
- Regulator NG (2 PSIG min. inlet), Boss 1000, 132136
- Gas Hose, 1 in. x 15 ft, Boss 1000, 132047

CA RESIDENTS:
 **WARNING**
 Cancer and reproductive harm. See
www.P65Warnings.ca.gov.

BIG HEAT

Push big heat into large, wide open job sites with the Boss™ heater series. With high CFM and 99% fuel efficiency this direct fired series has countless construction and industrial applications.



Easy to access,
transport & store
Never flat wheels
Heavy-duty handle



10-side case
for easy inside-out access



Stands on end



Stackable

Streamlines operation even as the job site changes with built-in features like:



Quickswitch™ Dual Fuel
LP or NG



Onboard voltmeter



Thermostat control



Diagnostic light

When space is up to temp, move heated air using the unit's fan.



Vent mode feature
moves air like a fan

TRADESMAN[®]

Gas Forced Air
Portable Heaters



Reliable, directional heat

Versatile and efficient forced air

- ✓ **Easy to operate** with dependable 3-trial ignition system, and diagnostic lights on Ultra models
- ✓ **99% direct-fired fuel efficiency** with variable output controls and thermostatic control on 170 and 400 models
- ✓ **Built to last** with industry's heaviest gauge combustion chamber and burner plate, and Tri-shield™ coated steel case

MODELS AVAILABLE IN:

LP

NG

DF (LP/NG)

125,000
(LP only)

170,000
(LP or NG)

400,000
(LP or DF only)



MADE IN USA
OF U.S. & IMPORTED PARTS



TRADESMAN®	125	170	170 Ultra	170N	170N Ultra	400	400 Ultra	400 Ultra DF
BTU/HR rating	70,000 / 125,000	125,000 / 170,000	125,000 / 170,000	125,000 / 155,000	125,000 / 155,000	250,000 / 400,000	250,000 / 400,000	175,000 / 400,000*
Heated air output (CFM)	400	550	550	550	550	1,050	1,050	1,050
Fuel type	LP	LP	LP	NG	NG	LP	LP	LP/NG
Fuel consumption LP gas min/max (lb/hr)	3.2 / 5.8	5.8 / 7.9	5.8 / 7.9	-	-	11.6 / 18.6	11.6 / 18.6	11.6 / 18.6
Fuel consumption NG gas min/max (cu ft/hr)	-	-	-	125 / 155	125 / 155	-	-	175 / 400
Inlet gas pressure LP gas	11.0 (in W.C.)	11.1 (in W.C.)	11.1 (in W.C.)	-	-	5.2 PSIG	5.2 PSIG	1.5 PSIG
Inlet gas pressure NG min/max	-	-	-	7/13.5 (in W.C.)	7/13.5 (in W.C.)	-	-	1.5 PSIG
Amps (start/continuous)	2.0 / 0.70	3.7 / 1.0	3.7 / 1.0	3.7 / 1.0	3.7 / 1.0	4.0 / 1.3	4.0 / 1.3	4.0 / 1.3
Service saver (self-diagnostics)	-	-	Yes	-	Yes	-	Yes	Yes
Unit length (in)	25.6	24.0	24.0	24.0	24.0	34.5	34.5	34.5
Unit width (in)	11.8	9.5	9.5	9.5	9.5	12.5	12.5	12.5
Unit height (in)	16.0	16.0	16.0	16.0	16.0	21.5	21.5	21.5
Shipping weight (lb)	28.0	29.9	29.9	34.0	34.0	51.0	51.0	55.0
Case material	Tri-Shield™**	Tri-Shield™**	Tri-Shield™**	Tri-Shield™**	Tri-Shield™**	Tri-Shield™**	Tri-Shield™**	Tri-Shield™**
High temp safety switch	Yes	Yes	Yes	Yes	Yes	Yes	Yes	Yes
Air flow safety switch	No	No	Yes	No	Yes	Yes	Yes	Yes
Gas pressure regulator	S (w/POL)	S (w/POL)	S (w/POL)	S	S	S (w/POL)	S (w/POL)	S (w/POL)
Unit mount thermostat	***	S	S	S	S	S	S	S
Gas hose	S	S	S	O	O	S	S	S
Certification	U.S. & CA	U.S. & CA	U.S. & CA	U.S. & CA	U.S. & CA	U.S. & CA	U.S. & CA	U.S. only

S=Standard O=Optional

* 250,000 - 400,000 BTU/HR on LP.

** Tri-shield coated steel with three unique protective layers including: a non-corrosive hot-dipped galvanized steel, an oven-cured epoxy primer and baked, thermosetting polyester.

*** Thermostat not available

CA RESIDENTS:
 **WARNING**
 Cancer and reproductive harm. See
www.P65Warnings.ca.gov.

RELIABLE, DIRECTIONAL HEAT

Put heat right where you need it with the Tradesman® propane forced-air heaters.



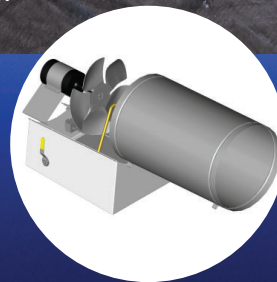
This time-tested design uses an axial fan to force heated air into a single direction 12 to 15 feet



Adjustable front leg on some models allows heat to be directed up or down



Manufactured in Wisconsin from durable components to provide years of dependable performance*



Made with the industry's heaviest gauge combustion chamber and burner plate. Tri-shield™ coated case protects against abrasion and corrosion*

Easy grip handle & lightweight design make it convenient to move and adjust as the job site changes

Loaded with reliable safety features. Certified to CSA and ANSI standards

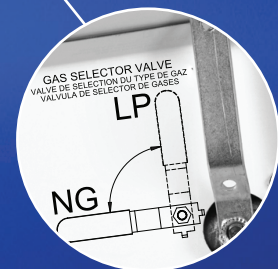
Diagnostic light feature included on Ultra models for added operator support and streamlined troubleshooting



Variable rate valve allows heater output to be adjusted from low to high for maximum fuel efficiency

Flanged male electrical inlet provides clean connection less prone to getting dirty or wet like pig tail designs

Thermostatic control saves fuel automatically



Fuel Flexibility

Operate Tradesman Ultra DF from propane or natural gas with the turn of a selector value

Tradesman® heaters are direct fired therefore require proper ventilation. Always install and use the heater in accordance with the owner's manual and instructions.

**Tradesman 125 not made in Wisconsin. Case made with enamel-coated steel and does not include thermostat.*

TRADESMAN® K

Kerosene Forced Air
Portable Heaters



Turnkey directional heat

Forced air with onboard fuel

- ✓ **Convenient fuel** with onboard fuel tank and option to run on kerosene, diesel or fuel oil #1
- ✓ **Easy to operate** with onboard air diagnostic system, fuel & pressure gauges, and digital space temp display
- ✓ **99% direct-fired fuel efficiency** boosted by onboard thermostat

ALL MODELS AVAILABLE IN:

Oil (Diesel)

75,000

125,000

175,000

210,000

400,000

650,000



TRADESMAN® K	K75	K125	K175	K210	K400	K650
BTU/HR rating	75,000	125,000	175,000	210,000	400,000	650,000
Heated air output (CFM)	265	520	600	650	1,400	3,600
Fuel type	Kerosene*	Kerosene*	Kerosene*	Kerosene*	Kerosene*	Kerosene*
Fuel consumption max. (gal/hr)	0.6	0.95	1.3	1.6	3.0	4.9
Tank capacity (gal)	5	10	13	13	29	50
Operating time max (hr)	8.3	10.5	10	8	9.5	10
Running amps	1.6	2.5	3.2	3.7	4.4	7.1
Pump Pressure (PSI)	3.8	5.5	6.5	8.5	125	110
Motor horsepower	1/8	1/5	1/4	1/3	1/2	3/4
Unit length (in)	32	36.1	41.8	41.8	52.5	69.2
Unit width (in)	11.8	21.5	23.1	23.1	31.4	32.8
Unit height (in)	16.8	24.6	26.1	26.1	32.8	48.7
Shipping weight (lbs)	32	64	72	74	163	298
Thermostat	S	S	S	S	S	S
Fuel & pump pressure gauges	S/S	S/S	S/S	S/S	S/-	S/-
On/off switch	S	S	S	S	S	S
Cord caddy	S	S	S	S	S	-
Certification	U.S. & CA	U.S. & CA	U.S. & CA	U.S. & CA	U.S. & CA	U.S. & CA

S=Standard O=Optional

* Kerosene, #1 and #2 Diesel or #1 Fuel Oil

CA RESIDENTS:
 **WARNING**
 Cancer and reproductive harm. See
www.P65Warnings.ca.gov.

CONVENIENT MULTI-FUEL HEAT

Put instant heat right where you need it with Tradesman® K forced-air heaters.

Uses axial fan to force heated air into a single direction 12 to 15 feet



**OPTION TO RUN FROM
MULTIPLE FUEL TYPES:**



Kerosene



Diesel #1 or #2



Fuel Oil #1



Tradesman® K heaters are direct fired therefore require proper ventilation. Always install and use the heater in accordance with the owner's manual and instructions.

NORSEMAN™ / WORKMAN®

Convection Portable Heaters



360-degree heat distribution

Convenient for early phases of construction

- ✓ **No electricity required**
- ✓ **99% direct-fired fuel efficiency** improved by adjustable shut-off controls that also save fuel
- ✓ **Built to last** with cast iron burners, one-piece body, and the Norseman incorporates the heaviest gauge steel in the class
 - Lightweight design at less than 35 lbs
 - Hose and regulator included with LP models (Canada)

NORSEMAN AVAILABLE IN:

LP



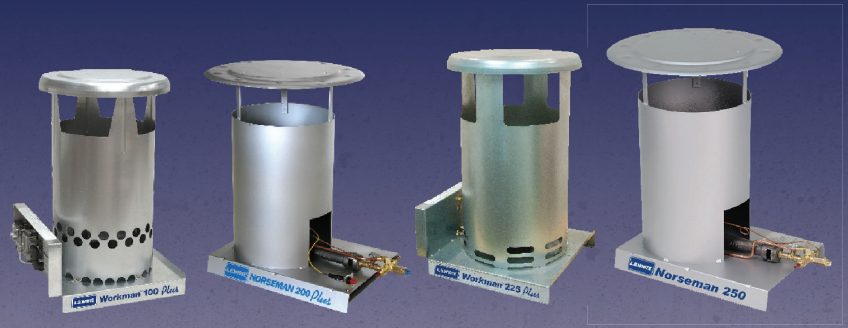
WORKMAN AVAILABLE IN:

NG

LP



 **MADE IN USA**
OF U.S. & IMPORTED PARTS



CONVECTION	WORKMAN® 100N Plus	NORSEMAN™ 200 Plus	WORKMAN® 225 Plus	NORSEMAN™ 250
BTU/HR rating	100,000	200,000	45,000-225,000	250,000
Fuel type	NG	LP	LP	LP
Fuel consumption LP gas max (lbs/hr)	-	9.3	2.1 / 10.4	11.6
Fuel consumption NG max (cu ft/hr)	100	-	-	-
Inlet gas pressure LP gas min/max (PSIG)	-	23.0	10.2	23.0
Inlet gas pressure NG min/max (in W.C.)	7.0/13.5	-	-	-
Ignition type	Piezo pilot	Piezo pilot	Piezo	Pilot
Unit length (in)	16.5	18.0	17.0	18.0
Unit width (in)	15.0	13.0	15.0	13.0
Unit height (in)	25.0	24.0	26.0	24.0
Shipping weight (lbs)	14.0	34.0	19.0	34.0
Flame safety	Thermocouple controlled gas valve	Thermocouple controlled gas valve	Thermocouple controlled gas valve	Thermocouple controlled gas valve
Burner type	Stainless steel	Cast iron	Stainless steel	Cast iron
Case material	Galvanized steel	Heavy gauge steel	Galvanized steel	Heavy gauge steel
Gas pressure regulator	S	S	S (w/pol)	S
Gas hose (10 ft U.S./15 ft CA)	O	S	S	S
Certification	U.S. & CA	U.S. & CA	U.S. & CA	*

S=Standard O=Optional

* Norseman™ 250 is L.B. White tested and evaluated, but not third-party certified. Not approved for use on combustible floors.

CA RESIDENTS:
 **WARNING**
 Cancer and reproductive harm. See
www.P65Warnings.ca.gov.

EFFICIENT HEAT WITHOUT ELECTRICITY

A convection heat pattern can warm up spaces fast. No electricity on the job site yet? No problem. Our convection heaters don't need it.



As the heater warms, the surrounding air will increase in temperature, expand, and rise to the top of the space. This forces down the cooler air so it can be heated creating a convection heat pattern.



Manufactured in Wisconsin from durable components to provide years of dependable performance*



No electricity required, so great for early phases of new construction



Unique top design provides superior heat distribution

No assembly required (Workman model)

Heavy-duty, one-piece barrel

Norseman model offers heaviest gauge steel body available on the market optimal for heavy industry use and rental fleets



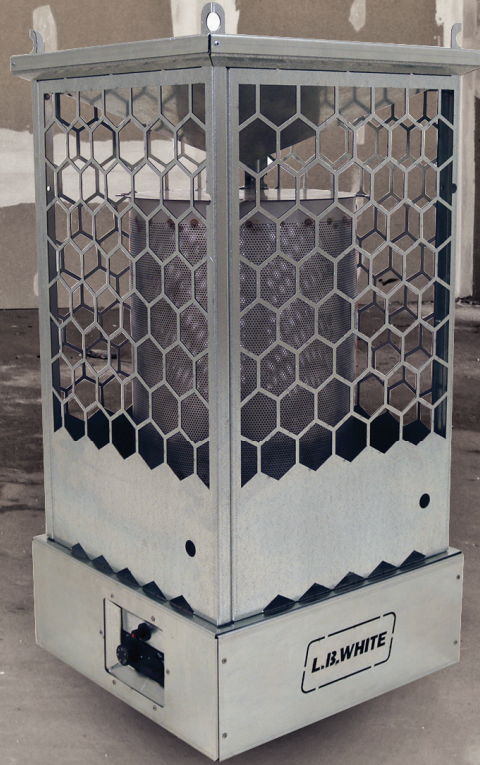
Adjustable output control for maximum fuel efficiency (Workman model)

Save fuel with adjustable shut-off (Norseman model)

Workman® and Norseman™ heaters are direct fired therefore require proper ventilation. Always install and use the heater in accordance with the owner's manual and instructions.

SUN BLAST[®]

Radiant Portable Heaters



Warm objects like the sun

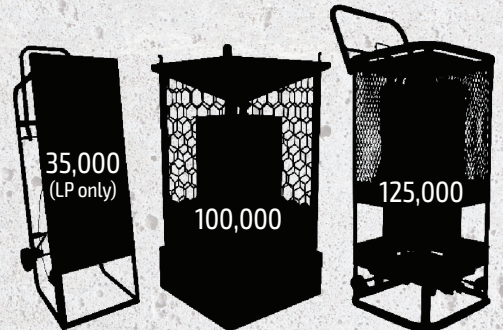
Easy spot-heat

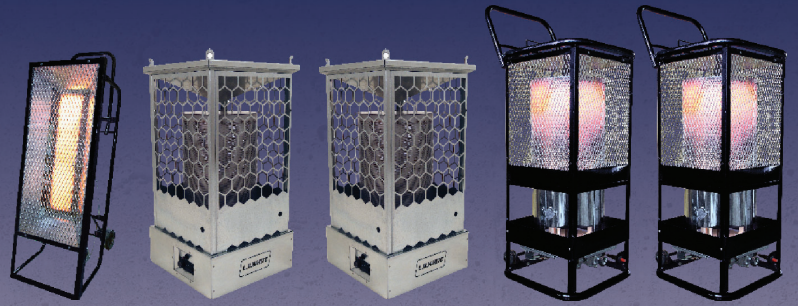
- ✓ **No electricity required**
- ✓ **99% direct-fired fuel efficiency** improved by adjustable shut-off controls that also save fuel
- ✓ **Built to last** made from durable materials with high temperature paint
- Lightweight design at less than 50 lbs with folding handle and wheels
- Hose and regulator included with LP models

MODELS AVAILABLE IN:

LP

NG





SUN BLAST®	35	HD 100	HD 100N	125	125N
BTU/HR rating	35,000	50,000 - 100,000	50,000 - 100,000	125,000	125,000
Fuel type	LP	LP	NG	LP	NG
Inlet gas pressure LP min/max (in W.C.)	22.0	13.5	13.5	13.5	7.0
Fuel consumption LP gas max (lb/hr)	1.6	2.1	-	5.8	-
Fuel consumption NG gas max (cu ft/hr)	-	-	100	-	125
Operating time 20 lb LP cylinder (hr)	12.5	-	-	-	-
Ignition type	Piezo	Piezo pilot	Piezo pilot	Piezo pilot	Piezo pilot
Unit length (in)	12.4	16.0	16.0	16.5	16.5
Unit width (in)	10.4	16.0	16.0	16.2	16.2
Unit height (in)	37.5	32.5	32.5	35.0	35.0
Shipping weight (lb)	30.0	49.0	49.0	43.0	43.5
Control valve	S	S	S	S	S
Excess flow valve	S	S	S	S	S
Safety tip over switch	S	S	S	S	S
Preset regulator	S	S	S	S	S
POL	S	S	S	S	-
Certification	U.S. & CA	U.S. & CA	U.S. & CA	U.S. & CA	U.S. & CA

S=Standard O=Optional

Accessories (sold separately):

- Regulator, NG (second stage), HD 100N, 500-07087
- Gas hose, HD 100, 1/2 in. x 50 ft., 500-132991
- Gas hose, HD 100N, 3/4 in. x 50 ft., 500-133318

CA RESIDENTS:



WARNING

Cancer and reproductive harm. See
www.P65Warnings.ca.gov.

HEAT WITHOUT ELECTRICITY

Radiant heat warms objects fast.



Like the sun, radiant heat warms objects not the air. Flat panel model provided.



No electricity required so great for early phases of new construction



Sun Blast 35 can operate from convenient 20 lb. propane tank

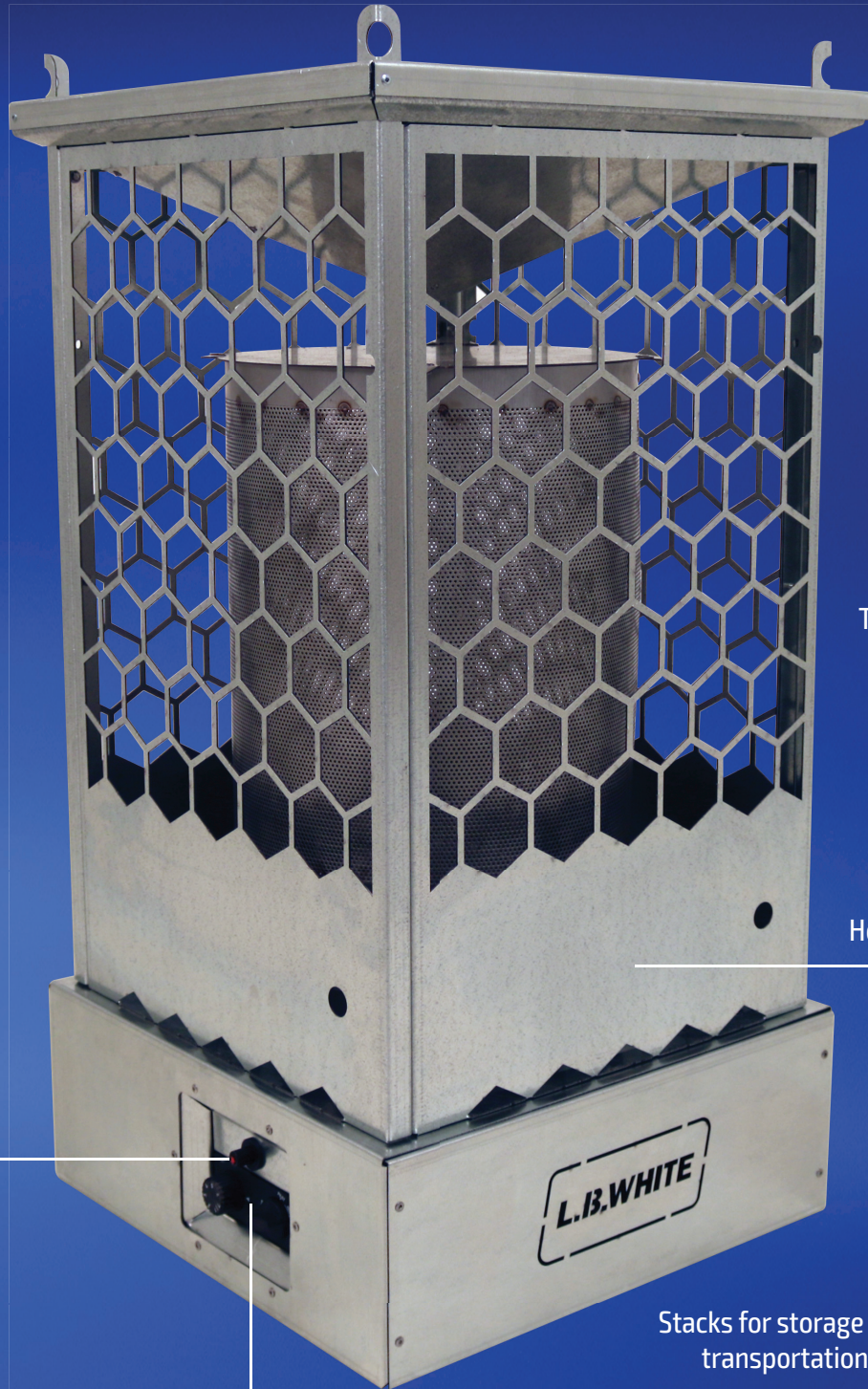
Option to hang during operation
to free-up floorspace



Sun Blast 35 provides
directional heat



Get 360° heat throw
with Sun Blast 100
and 125



Tip over switch shuts
down for safety

Heavy-duty body made
from 16-gauge
galvanized steel

Easy push-button
Piezo ignition

Stacks for storage and
transportation

7-setting thermostatic
controller with recessed
controls to prevent damage

Sun Blast® heaters are direct fired therefore require proper ventilation. Always install and use the heater in accordance with the owner's manual and instructions.

TORCHES

Gas Handheld
Portable Torches



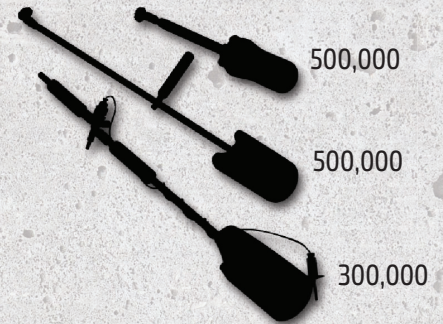
Year-round handheld torches

For thawing pipes, burning brush and more

- ✓ **Easy to operate** with lightweight handle, manual or pilot light models, and shut-off safety valves on some models
- ✓ **Built to last** with steel and cast-iron heads

ALL MODELS AVAILABLE IN:

LP



 MADE IN USA
OF U.S. & IMPORTED PARTS



TORCHES	Torchman™ SV	Torchman™ 500	Bertha™ 500
BTU/HR rating	300,000	500,000	500,000
Fuel type	LP	LP	LP
Ignition type	Manual	Manual	Manual
Fuel consumption LP gas max (lb/hr)	14.0	23.2	23.2
Fuel consumption NG gas max (cu ft/hr)	-	-	-
Head type	Steel	Steel	Cast iron
Assembled length (in)	29.5	36.0	22.0
Control valve	S	S	S
Excess flow valve	S	S	S
Safety shut-off valve	Yes	-	-
Preset regulator	S	-	O*
POL	S	S	O**
Gas hose (10 f. U.S./15 ft CA)	S	S	S
Thermocouple	S	-	-
Unit weight (lb)	5.2	3.5	7.0
Shipping weight: bulk packed (lb)***	-	-	7.0
Shipping weight: individually packed (lb)	-	-	-
Shipping weight: skin packed (lb)***	8.5	6.0	7.5
Certification	CA	CA	-

S=Standard O=Optional

*Recommended Option

**Included standard with optional regulator assembly

***Bulk Pack sold in packages of 8 torches; Skin packed sold in packages of 4 torches.

CA - Canada model defined by separate configuration.

CA RESIDENTS:
 **WARNING**
 Cancer and reproductive harm. See www.P65Warnings.ca.gov.

PC-31

Portable Evaporative Cooler



Combines low operating costs with rental-ready features

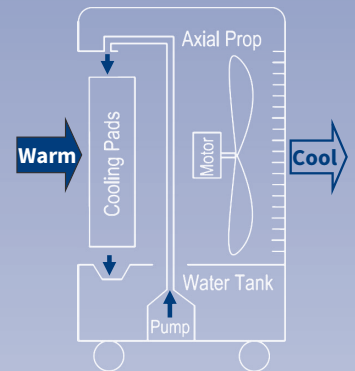
✓ Rental-ready features

- Automatic pump shut-offs prevents pump burnout when water runs out
- Quiet operation at less than 60 dB
- Adjustable with louvers that allow airflow to be adjusted up or down
- Option to set run times

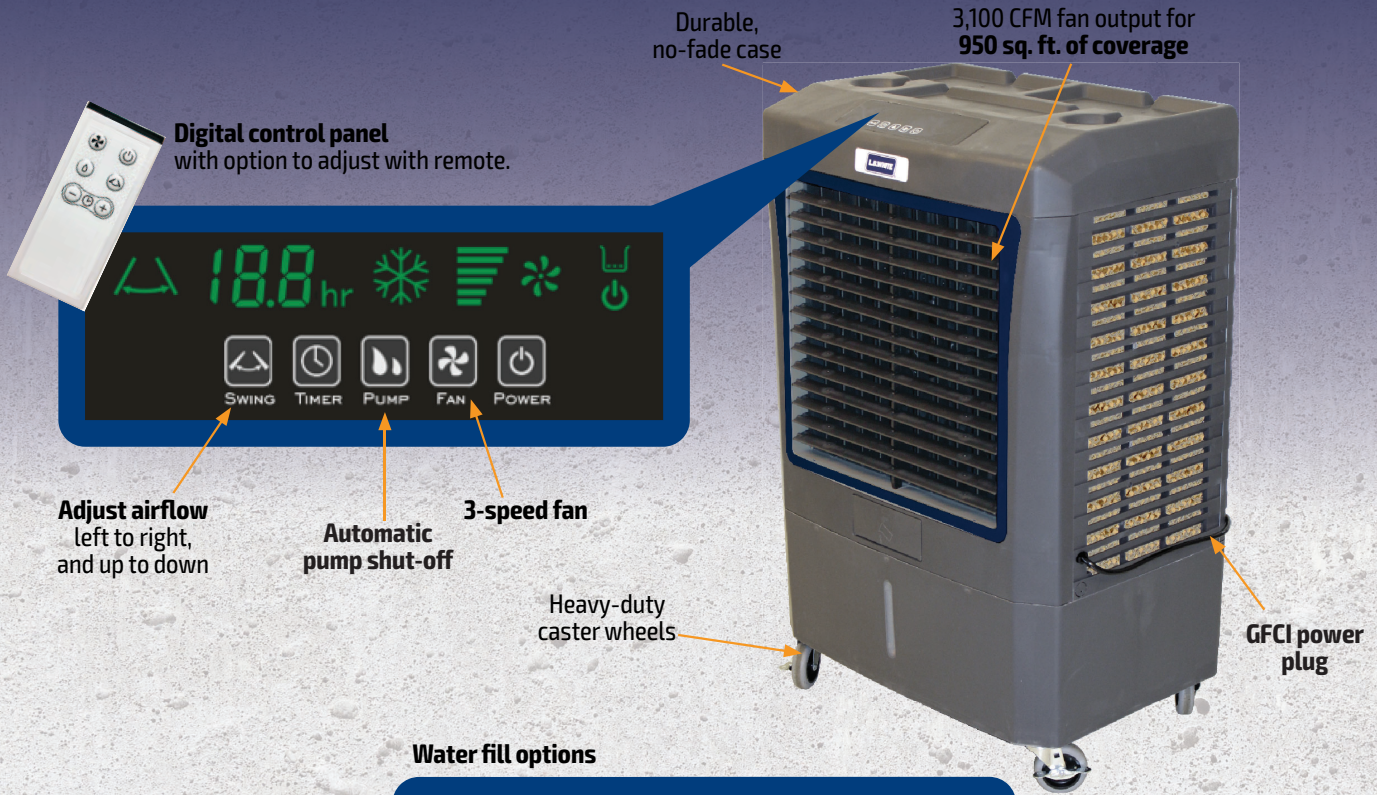
✓ Low operating cost

- 10-gal water tank provides 3-4 hours or runtime with easy to read water level display
- Convenient garden hose connection for continuous fill
- Operates from standard circuits with low amp draw and safe GFCI connection

Cooling Technology



Water from an onboard tank is pumped to the top of a filter-like cooling pad. Then, a 3100 CFM fan pulls warm, environmental air over the filter and pushes out air with a cooling effect 30+ feet.



Water fill options



COOLING CHART		RELATIVE HUMIDITY					
		20%	30%	40%	50%	60%	70%
Ambient Temp °F	75°F	-24	-21	-18	-12	-14	-12
	80°F	-24	-22	-19	-17	-15	-13
	85°F	-26	-23	-20	-18	-15	-13
	90°F	-27	-24	-21	-18	-16	-13
	95°F	-28	-25	-22	-19	-16	
	100°F	-30	-26	-23	-19	-17	
	105°F	-31	-27	-24	-20	-17	
	110°F	-33	-28	-24	-21		
	115°F	-34	-29	-25	-21		

**Feels cooler °F
(approx. 10ft away)**

PORTABLE EVAPORATIVE COOLER	PC-31
Coverage area	950 sq. ft.
Airflow delivery	3,100 CFM
Fan motor	1/5 H.P. 115 V 3 speed
Power requirement	115 V
Amps	2.8
Water tank capacity	10.3 Gal
Run time capacity	3-4 hours
Max water connection pressure	50 PSI
Unit dimensions	38" H X 24" W X 17" D
Unit weight	45 Lbs.
One year warranty	S

ACCESSORIES

THERMOSTATS	FITS MODELS	DESCRIPTION	PART #
	FOREMAN® 230, 500, 750, PREMIER® 40, 80 2.0, 170 2.0, 350 DF 2.0, 700 DF	THERMOSTAT 25' CORD	30125
	PREMIER® 40, 80 2.0, 170 2.0, 350 DF 2.0, 700 DF	THERMOSTAT WITH 1.4' CORD	132976
REGULATORS	FITS MODELS	DESCRIPTION	PART #
	PREMIER® 40	REGULATOR, PROPANE GAS W/ POL & HAND WHEEL	26377
	PREMIER® 80 LP	PROPANE REGULATOR WITH HAND WHEEL CONNECTOR	26377
	PREMIER® 170 LP	PROPANE REGULATOR WITH HAND WHEEL CONNECTOR	26419
	PREMIER® 170 DF	DUAL-FUEL REGULATOR (PROPANE & NATURAL GAS)	26423
	PREMIER® 80, 170	VENTLESS REGULATOR	28690
	PREMIER® 350 DF	VENTLESS REGULATOR	28691
	PREMIER® 350 DF, 700 DF, FOREMAN® 230, 500, 750*	DUAL-FUEL REGULATOR (PROPANE & NATURAL GAS)	25141
	TORCHES	PROPANE REGULATOR	21788
GAS HOSE	FITS MODELS	DESCRIPTION	PART #
	PREMIER® 40	3/8" X 15' 3/8" NPT GAS HOSE KIT W/ADAPTER	22277
	UNIVERSAL	1/2" X 15' UNIVERSAL GAS HOSE KIT C/W 5 ADAPTERS	24600
	UNIVERSAL	1/2" X 20' UNIVERSAL GAS HOSE KIT C/W 5 ADAPTERS	25960
	UNIVERSAL	1/2" X 25' UNIVERSAL GAS HOSE KIT C/W 5 ADAPTERS	25961
	PREMIER® 350 DF, FOREMAN® 230, 500	3/4" X 15' GAS HOSE	25965
	FOREMAN® 750	1" X 15' GAS HOSE	132047
DUCTING	FITS MODELS	DESCRIPTION	PART #
	PREMIER® 40	8" X 12' WHITE DUCT KIT (INCL. ADAPTER RING)	132544
	PREMIER® 80, 170	12" X 12' WHITE DUCT KIT (INCL. ADAPTER RING)	26347
	PREMIER® 350	18" X 12' WHITE DUCT KIT (INCL. ADAPTER RING)	22835
	PREMIER® 700 DF	24" X 25' WHITE DUCT KIT (INCL. ADAPTER RING)	133767
	FOREMAN® 230, 500, 750	12" X 25' WHITE DUCT KIT (INCL. ADAPTER RING)	30052
	FOREMAN® 500, 750	20" X 25' WHITE DUCT RECIRCULATING KIT (INCL. CLAMP)	30053
	FOREMAN® 230, 500, 750	16" X 25' WHITE DUCT KIT (INCL. CLAMP)	30076
MISC.	FITS MODELS	DESCRIPTION	PART #
	FOREMAN® 230, 500, 750 DF, JOURNEYMAN	6" DIA. EXHAUST PIPE EXTENSION, STEEL	30161
	FOREMAN® 750 OIL	8" DIA. EXHAUST PIPE EXTENSION, STEEL	30161A
	FOREMAN® 230, 500, 750 DF, JOURNEYMAN	6" DIA. RAIN CAP	30162
	FOREMAN® 750 OIL	8" DIA. RAIN CAP	30162A
	FOREMAN® 500, 750 DF	STACKING KIT	30903
	FOREMAN® 500, 750	16" SINGLE DUCT ADAPTER KIT	30902
	TORCHES	POL STEM	571701
	TORCHMAN 500	TORCH HANDLE, SLIDING	25791

For a complete listing of all accessories please see our Parts and Accessories Price List

* When running on NG requires 1" hose diameter and inlet pressure of at least 10 P.S.I. When inlet pressure is 2 to 10 P.S.I. use regulator, 132136.

411 MASON STREET • ONALASKA, WISCONSIN 54650

(800) 345-7200 - (608) 783-6115 FAX

WWW.LBWHITE.COM



WWW.FACEBOOK.COM/LBWHITECOMPANY